

The Trail Difficulty Rating System is a basic method used to categorize the relative technical difficulty of recreation trails. The Trail Difficulty Rating System can:

- * Help trail users make informed decisions
- * Encourage visitors to use trails that match their skill level
- * Manage risk and minimize injuries
- * Improve the outdoor experience for a wide variety of visitors
- * Aid in the planning of trails and trail systems

This system was adapted from the International Trail Marking System used at ski areas throughout the world. Many trail networks use this type of system. The system is applicable to mountain bikers, hikers and equestrians.

Trail	Difficulty	Miles
B		0.62
Ball Cap		0.64
Bear Bones		0.83
Berry's		0.79
Big Springs		0.62
Boggs Ridge		0.73
Buzzard's		0.22
Charlie's		0.46
Crew		0.49
Gail's		3.30
Game		1.39
Grizzly		1.64
Hardtail		0.64
High Chair		0.37
High Point		0.52
Hoberg's Loop		1.29
Houghton Creek		1.25
Jethro's		0.80
John's		0.75
Karen's		0.39
Mac's		0.77
Scout		0.75
Shaker		1.00
Stinger		1.19
Thinner's		0.22

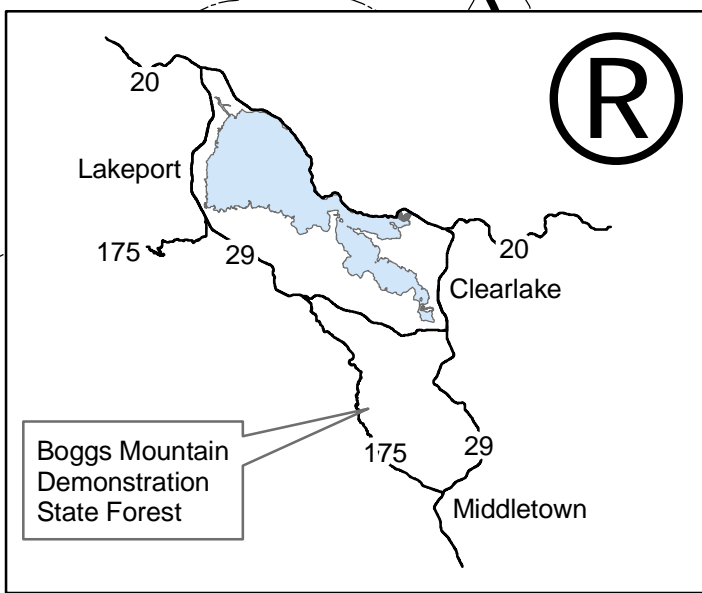
Legend	
	Easy terrain
	Intermediate terrain
	Advanced terrain
	Expert terrain

Trails are open to all non-motorized users. Trails noted as Black Diamond and Double Black Diamond trails may be narrow, steep and/or have obstacles and may not be suitable for all users. If trail conditions are too steep or narrow for your comfort and skill, for your safety, please do not use the trail. If the trail is too wet or very dry, use caution, as damage can result. Trails are maintained by volunteers. Please respect the trails and treat them as your own.

The Friends of Boggs Mountain is a non-profit volunteer organization, formed to enhance the visitor's experience at Boggs Mountain Demonstration State Forest. Our projects include:

- Maintaining, building, signing and mapping trails
- Developing a self-guided interpretive trail
- Developing and distributing informational materials
- Distributing a quarterly newsletter

Maps printed by:
 Friends of Boggs Mountain
 P. O. Box 735
 Cobb, CA 95426
<http://boggsmountain.org>
 Donations are appreciated



- Gates - May Be Locked
- Roads
- Trails - nonmotorized use only
- Designated Campground
- Residential Areas